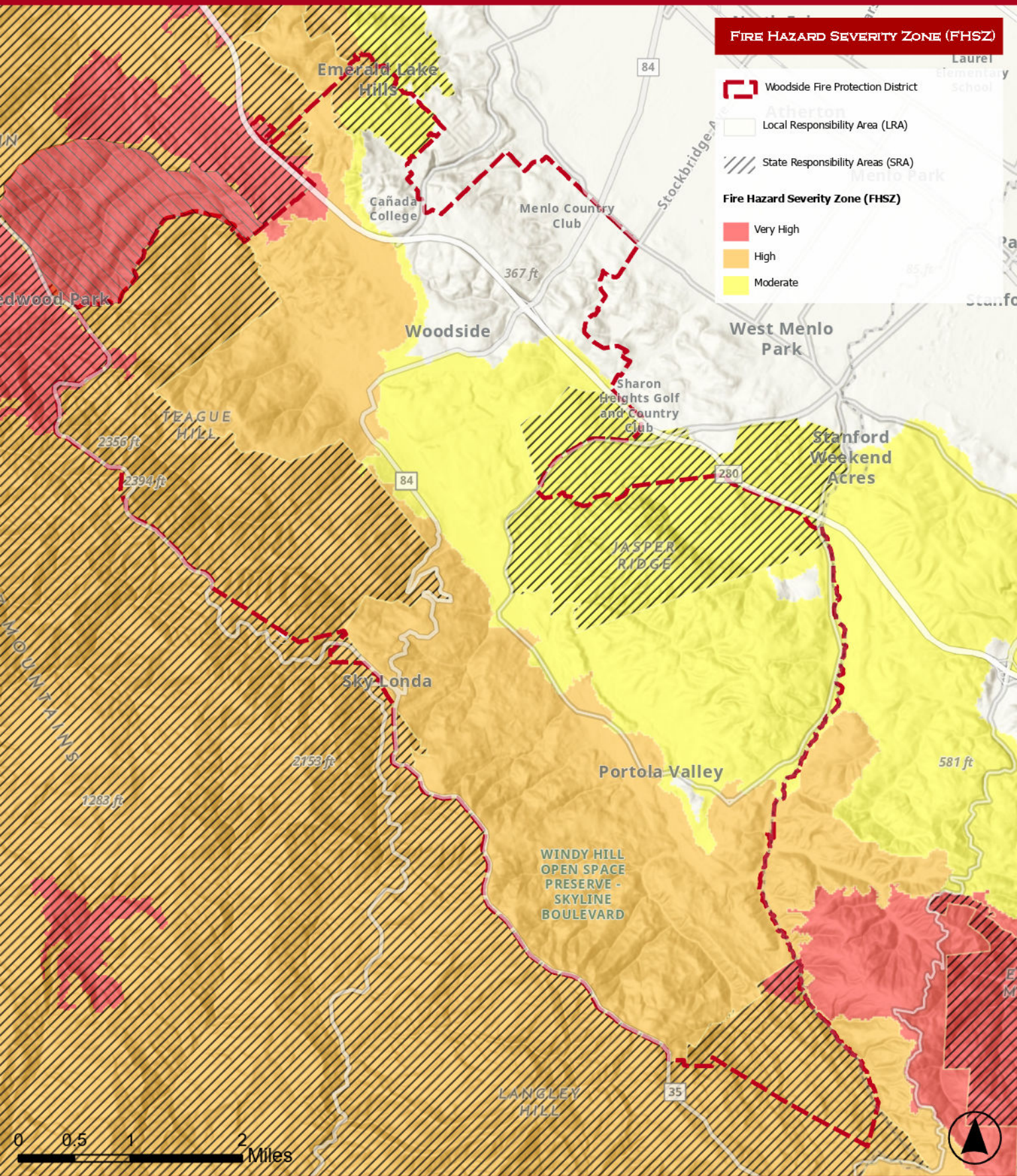




# WOODSIDE FIRE PROTECTION DISTRICT



## FIRE HAZARD SEVERITY ZONE (FHSZ)

- Woodside Fire Protection District
  - Local Responsibility Area (LRA)
  - State Responsibility Areas (SRA)
- Fire Hazard Severity Zone (FHSZ)**
- Very High
  - High
  - Moderate

